



Kansas City Kansas
Community College



CENTENNIAL PATH

KCK Community Education, Health and Wellness Center

VISION: Provide hope, end generational poverty, improve the quality of life, and increase the socioeconomic mobility of our residents living in and around downtown Kansas City, Kansas



DEAR FRIENDS,

For nearly 100 years, Kansas City Kansas Community College (KCKCC) has served Wyandotte County and the surrounding area as an educational hub and economic driver for our community. With the College's beginning in the heart of Kansas City, Kansas in 1923, Kansas City Kansas Junior College was founded to meet the educational and training needs of the downtown business community.

As we approach our Centennial year in 2023, KCKCC serves over 9,000 students per year and is embarking on one of its most significant projects of its time. Returning to our roots, and going to where people need us the most, KCKCC plans to build a comprehensive Community Education Center in the heart of the urban core in Kansas City, Kansas.

Beginning my presidency at KCKCC in the summer of 2018 and seeing the staggering economic and social disparities between the west and east sides of Wyandotte County, my question has been 'why do we not have a presence in KCK's urban core where educational and social opportunities are so desperately needed and where the people need us the most?'

As a community, we must do better! Working collaboratively with Kansas City Kansas Public Schools, Swope Health and CommunityAmerica Credit Union, KCKCC plans to build a collaborative and comprehensive Community Education, Health and Wellness Center that meets the holistic needs of those living in KCK's urban core.

Kansas City Kansas Community College has committed \$13,000,000 towards this project. However, we need your help to build this anchor institution that will provide the education and services so desperately needed to create a self-sustaining economic solution for the community that will help end the social and economic inequities that have prevailed in this area for decades.

Please help us create hope and lift an entire community out of generational poverty.



SINCERELY,

Dr. Greg Mosier
President

KCKCC'S COMMUNITY IMPACT:

A Mission to Serve



- \$144,700,000 in alumni spending
- \$34,400,000 in direct operational income to the county
- \$3,300,000 in student spending

Resulting In

\$182,400,000
Added Income

- or -

2,811
Jobs Supported

For decades, KCKCC has been a driving force behind the economic and social development of Wyandotte County. In fact, one out of every 50 jobs in the county was attributed to KCKCC, according to the economic impact study completed in 2017.

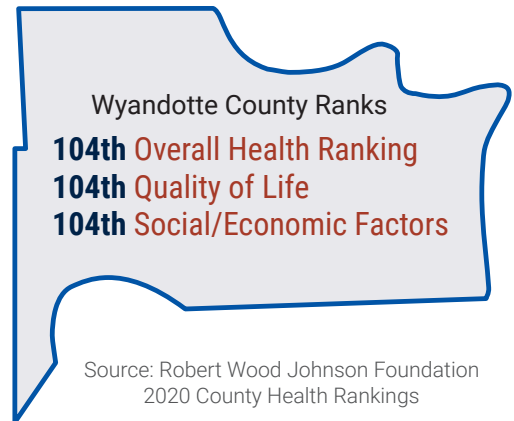
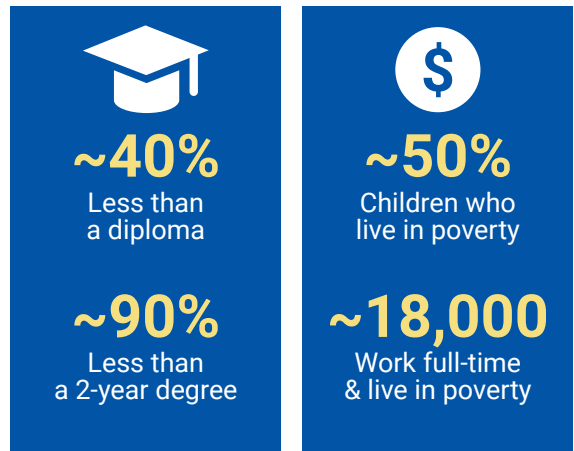
A DRIVER FOR ECONOMIC AND SOCIAL MOBILITY:

Education + Employment + Community Support Services is the recipe to not only build a sustainable community, but to also end generational poverty. Through strong partnerships with community organizations, and business and industry, the overarching goal of this project is to provide comprehensive education and services to prepare individuals from KCK’s urban core and surrounding communities to immediately obtain employment in high-demand and high-wage occupations or to obtain advanced education. Since 2010, Wyandotte County has experienced sustained job growth at more than twice the rate of the KC metro area, state and country.

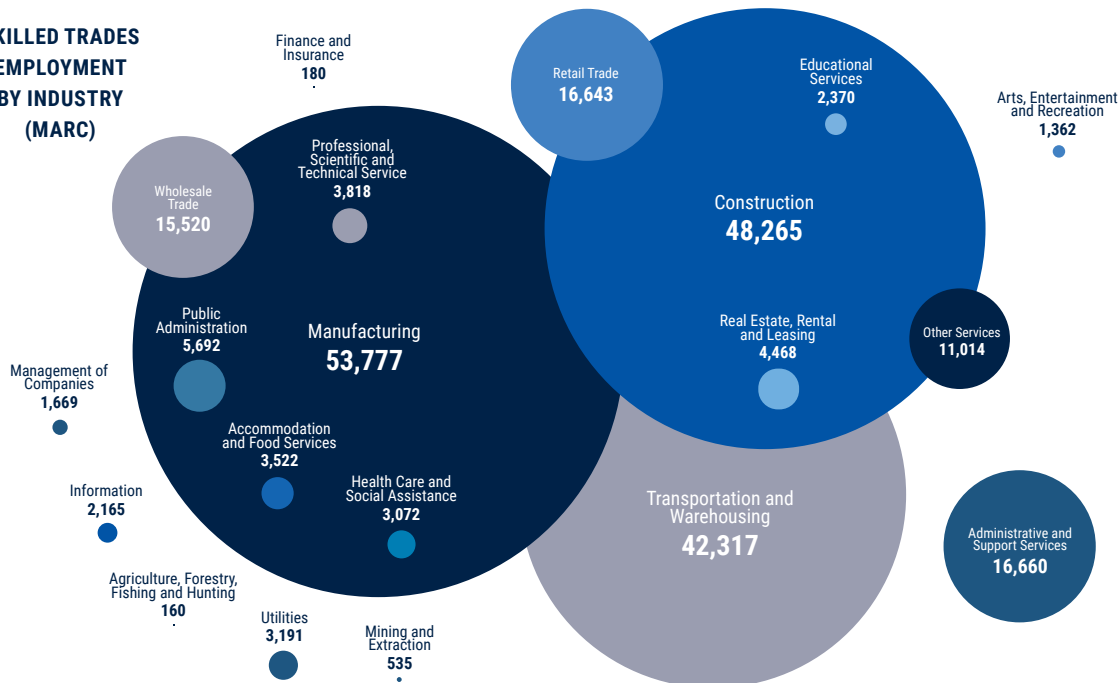
The county has the second highest average wage in the state at \$46,816, yet lacks the skilled workforce to obtain many of these jobs. The lack of a skilled workforce contributes to two-thirds of the county’s high paying jobs going to individuals who live outside of Wyandotte County.

The Kansas City metropolitan area is a region rich in high-wage, high-demand skilled trades employment opportunities. As shown in the data below provided by the Mid-America Regional Council (MARC), in their 2019 Talent to Industry Exchange Skilled Trades Report, at the time of the report there were approximately 236,000 skilled trade jobs in the greater Kansas City region. This workforce made up approximately one out of every five total jobs, or 21%, of all jobs. Of all employment sectors, manufacturing, construction and transportation/warehousing made up 144,359 jobs, or approximately 62% of all regional skilled jobs.

Eastern Wyandotte Quick Facts



SKILLED TRADES EMPLOYMENT BY INDUSTRY (MARC)



Credit: Mid-America Regional Council (MARC) January 2019 Data Source: Jobs EQ

KCK COMMUNITY EDUCATION, HEALTH AND WELLNESS CENTER:

A Vision to Transform a Community

To help individuals overcome the cycle of poverty, services must be developed to support the whole person. Strategically designed to meet the holistic needs of the downtown community and eastern Wyandotte County, the state-of-the-art center will offer health, wellness and education services that can elevate the community. Each partner plays a critical role in supporting the health and education of residents.

Kansas City Kansas Community College

For this life-changing project, KCKCC is the lead partner and will provide technical education programming to prepare graduates for successful high-wage, high-demand career fields. The college also will offer ESL, GED, other associate degrees and transfer programs. For example, through a partnership with University of Kansas Health System, new employees without a diploma can attend classes onsite with KCKCC instructors to earn their GED. Two major expansion areas include Commercial Construction Technology and Automation Engineering, which will help meet the growing need for these high-paying careers.

In partnership with KCK Public Schools, 11th and 12th graders will attend KCKCC and receive their high school diploma and associate of applied science degree in Commercial Construction Technology simultaneously. KCKCC will triple current enrollment in Commercial Construction Technology and Automation Engineering alone, serving 300 additional students within nine years. Graduates could earn an salaries of \$50,000-\$70,000, generating an estimated \$15 million in additional economic impact.

Clemente Luna graduated from KCKCC in 2005. After gaining experience with other employers, he opened his own HVAC business in 2017 and went from employee to employer. He has employed as many as 30 others.

“Last year we grossed annual revenue of \$2.1 million, and this year is looking like the same. So I am very grateful for the opportunities that we have gotten, but they came to us because we have exceeded many of our customer’s expectations. I couldn’t of done it alone. My team is a great team, and I am very proud of our accomplishments.”

Cassandra Puletapuai changed the trajectory of her life after graduating from KCKCC’s Construction Technology program in 2017. Upon completion of the program, she started a company that focuses on repair and remodeling projects.

Like Clemente’s business, there has been substantial growth in the Wyandotte/KCK business community. Manufacturing and logistic companies, such as Urban Outfitters, Amazon and General Motors, have expanded or opened new facilities in the county. They require thousands of skilled workers trained to succeed in new trades. To meet this demand, KCKCC is strategically expanding its current offerings and developing new programs. The expansion also supports growth goals from the Mid-America Regional Council:

“Continue to support growth in the manufacturing sector, particularly in those areas where the region has a competitive advantage (vehicle and food manufacturing) and areas where technology offers opportunities to attract companies to locate and grow.”



Construction coupled with education has provided vast opportunities for me to ascend the proverbial ladder of success. This experience has paved the path to capture a piece of the American Dream. I wish for others, notably marginalized groups, to consider construction as a means to harness success.

Additional space, equipment and major investment is required to continue the positive economic growth for the region. At the KCK Community Education, Health and Wellness Center, the college will implement an Automated Engineering Technology class specifically for non-traditional learners. The college also will begin a Pre-Automation Engineering Technology program and short-term training certifications in Industrial Maintenance Technology (IMT) and robotics.

In fact, the college already has launched with the KC chapter of the Federation of Advanced Manufacturing Education (FAME) — the first chapter in Kansas. Manufacturing companies who belong to FAME sponsor students to participate. Students spend time in the classroom and on-the-job in a paid internship. This earn while you learn program allows students to graduate to a high-paying job with the sponsor.

Kansas City Kansas Public Schools

KCK Public Schools serve the urban core with five high schools and more than 23,000 students. Working hand-in-hand with KCK Public Schools and other local school districts, a Commercial Construction Technology program will be created. High school juniors and seniors will attend KCKCC all day to take their college-level courses in construction technology while they also take their general education courses required to obtain both an Associate of Applied Science from KCKCC and their high school diploma from the KCK Public Schools. This positions students for high-demand jobs upon graduation.

Swope Health

Wyandotte County ranks 104 of the 105 counties in Kansas when measuring multiple health-related outcomes. The need for improved health is essential to uplifting the community. Swope Health, the largest federally qualified health clinic in the Kansas City metropolitan area, serves 45,000 people annually and



continues to partner and expand in Wyandotte County.

Swope Health will provide primary care, children’s health, dental services and women’s health at the new center. Partners envision shared clients once those presenting for care or services from one agency become aware of other opportunities for education, health and behavioral health services, community supports and other assistance.

In the fall of 2021, a young woman visited the Swope Health Wyandotte clinic late in the day with her young son in tow. During this walk-in visit, she was visibly upset. Her provider noted significant injuries, and the young woman shared that she had been abused. The team escalated her case to the emergency room. The next day, the team followed up with the young woman to provide food and shelter resources — delivering whole person care.

CommunityAmerica Credit Union

CommunityAmerica Credit Union is committed to improving the financial well-being of its more than 250,000 members and the greater Kansas City community. Their model, which is based on “people helping people,” allows them to share their profits with their members and meaningfully invest back into the community. In 2020, CommunityAmerica gave back \$8.4 million dollars to members and invested more than \$1 million into the community during an unprecedented time of need.



COMMUNITY IMPACT:

\$60+ Million Economic Development Project for Downtown KCK

DESCRIPTION	TOTAL	KCKCC	SWOPE	CACU
Sitework & Construction Costs	\$43,705,102	\$35,357,029	\$6,956,539	\$1,391,534
Professional Services:	\$4,689,592	\$3,792,183	\$755,342	\$142,067
Fixtures, Furnishings & Equipment	\$7,429,867	\$6,010,695	\$1,182,612	\$236,561
Contingencies & Escalation	\$6,175,982	\$4,979,934	\$998,601	\$197,447
TOTAL PROJECT COSTS:	\$62,000,544	\$50,139,841	\$9,893,094	\$1,967,608
TOTAL SQUARE FEET:	100,000	80,800	16,000	3,200

People and Jobs

PROJECT PARTNER	PROJECTED PEOPLE SERVED ANNUALLY: YEARS 1-3	PROJECTED PEOPLE SERVED ANNUALLY: YEARS 5+	DCEC NEW JOB CREATION	TOTAL EMPLOYEES ON-SITE	TOTAL FTE EMPLOYEES ON-SITE
KCKCEHWC Owners Association	N/A	N/A	8.0	8.0	8.0
Kansas City Kansas Community College	800	1,200	9.0	16.0	12.0
Swope Health	5,000	10,000	10.0	35.0	30.0
CommunityAmerica Credit Union	5,000	10,000	6.0	7.0	6.0
Projected Total as of July 2021	10,800	21,200	33	66	56



CENTENNIAL PATH CAMPAIGN:

Leading Together

Leadership

KCKCC President's Downtown Advisory Council

Rita Adams
*Economic Opportunity
Foundation*

Dr. Scott Balog
KCKCC

Whitney Bartelli
*CommunityAmerica
Credit Union*

**Commissioner Tom
Burroughs**
*Unified Government
of Wyandotte County/
Kansas City, Kansas*

**Commissioner
Melissa Bynum**
*District 1 Unified
Government of
Wyandotte County/
Kansas City, Kansas*

Rev. Tony Carter
Salem Baptist Church

Irene Caudillo
*Mayor's Office
Unified Government
of Wyandotte County/
Kansas City, Kansas*

Michael Dean
*Mi Rancho Tequila
La Familia Dean Lozoya
Foundation*

Bill Dunn, Jr.
*Campione Interior
Solutions, LLC*

Jim Echols
*Renaissance
Management & Training*

Lisa Ginter
*CommunityAmerica
Credit Union*

Kris Green
KCKCC

**Elnora Tellis
Jefferson**
*Historic Northeast-
Midtown Association, Inc.*

Harold L. Johnson, Jr.
*Senior Pastor and Chief
Executive Officer
Faith Deliverance Family
Worship Center*

Greg Kindle
*Wyandotte County
Economic Development
Council*

Dr. Shelley Kneuvean
KCKCC

Tony Martinez
*Wyandotte County
District Court Judge*

Alise Martiny
*Greater Kansas
City Building and
Construction Trades
Council, AFL-CIO*

Dr. Chris Meiers
KCKCC

Dr. Greg Mosier
KCKCC

Edwin Birch
*Kansas City Kansas
Public Schools*

Jerry Pope
KCKCC

J.D. Rios
*Mayor's Office,
Unified Government
of Wyandotte County/
Kansas City, Kansas*

Angela Smart
Swope Health

Mary Hurla Spangler
KCKCC Foundation

Dr. Anna Stubblefield
*Kansas City Kansas
Public Schools*

Jose Sustaita
IBEW Local Union 124

**Bishop Lemuel
Thuston**
*Kansas East Jurisdiction
(COGIC)*

Cleon Wiggins
KCKCC

Centennial Path Campaign Steering Committee

McKenzie Breidenthal
Breidenthal Family Foundation

Mike Bukaty
Bukaty Companies

Michael Dean
Mi Rancho Tequila La Familia Dean Lozoya Foundation

William H. Dunn, Jr.
Campione Interior Solutions Dunn Family Foundation

Jim Echols
Renaissance Management & Training

Craig Gaffney
Country Club Bank & Trust

Carlos Gomez
Greater Kansas City Hispanic Chamber of Commerce

William Hutton
Attorney at Law

Alise Martiny
Greater Kansas City Building and Construction Trades Council, AFL-CIO

Rose Mulvany Henry
Rose Henry Law

Mary T. Ricketts
Turning Point Training and Development, LLC

Angela Smart
Swope Health

Matt Watkins
Reece Commercial, Inc.

KCKCC Foundation Board

Matt Watkins, Chair
Reece Commercial, Inc.

Erik Dickinson, Vice-Chair
Urban Ranger Corps

Amarilis Valdez-Dempsey, Treasurer
Bank of America

Mike Bukaty, Secretary
Bukaty Companies

Andrea Generaux
Local Initiative Support Network of Greater Kansas City

Linda Hoskins Sutton
KCKCC Trustee

Brad Isnard
KCKCC Trustee

Danielle Jones
Association of Women's Health, Obstetric and Neonatal Nurses

Tom Mayfield
American Family Insurance

Greg Mosier
KCKCC President

Randy Powell
Heartland Print & Design; United Rotary Brush

Melanie Simpson
University of Kansas Health System

Leah Wilken
CommunityAmerica Credit Union

KCKCC Board of Trustees

Brad Isnard
Chair

Evelyn Criswell
Vice-Chair

Donald Ash

Mark S. Gilstrap

Linda Hoskins Sutton

Mary Ricketts

Brenda Scruggs Andrieu, Ph.D.



Kansas City Kansas Community College

